

West Saanich Rd between Interurban Rd and Prospect Lake Rd

April 01, 2019 To April 05, 2019



The data presented here is for information purposes only and should not be considered authoritative for construction, geotechnical, engineering, navigational, legal, or other site-specific uses. The information shared is owned by the Transportation Division of the Engineering Department at the District of Saanich. Accuracy is not guaranteed.

Start Date: 1-Apr-19
 Start Time: 0:00
 Station ID: M0040-05

Location 1: West Saanich Rd between Interurban Rd and Prospect Lake Rd

Note: Interurban Rd and Prospect Lake Rd

DATE:	April 1, 2019		April 2, 2019		April 3, 2019		April 4, 2019		April 5, 2019		WK AVG		WK AVG	HOURLY
	MON		TUE		WED		THURS		FRI		CH 1+2		%	
Time:	NB	SB	NB	SB	NB	SB	NB	SB	NB	SB	NB	SB		
12-1 AM			16	6	18	10	20	7			18	8	26	0.2%
1-2 AM			8	4	4	2	10	4			7	3	11	0.1%
2-3 AM			6	3	7	2	7	3			7	3	9	0.1%
3-4 AM			5	9	2	5	1	4			3	6	9	0.1%
4-5 AM			16	14	14	16	14	11			15	14	28	0.2%
5-6 AM			53	67	51	50	55	54			53	57	110	0.9%
6-7 AM			247	222	215	217	251	218			238	219	457	3.6%
7-8 AM			288	582	263	564	268	605			273	584	857	6.7%
8-9 AM			393	670	353	628	367	648			371	649	1020	8.0%
9-10 AM			397	435	361	448	359	470			372	451	823	6.4%
10-11 AM			415	401	354	406	359	428			376	412	788	6.1%
11-12 PM			402	449	365	413	427	390			398	417	815	6.4%
12-1 PM			408	424	398	423	432	453			413	433	846	6.6%
1-2 PM			468	414	422	421	400	441			430	425	855	6.7%
2-3 PM			492	442	483	405	497	431			491	426	917	7.2%
3-4 PM			541	547	536	517	642	508			573	524	1097	8.6%
4-5 PM			719	485	668	466	829	479			739	477	1215	9.5%
5-6 PM			663	383	617	378	683	433			654	398	1052	8.2%
6-7 PM			342	331	331	293	350	322			341	315	656	5.1%
7-8 PM			232	221	248	199	248	278			243	233	475	3.7%
8-9 PM			198	121	170	117	231	176			200	138	338	2.6%
9-10 PM			134	61	127	86	180	108			147	85	232	1.8%
10-11 PM			75	36	82	32	87	28			81	32	113	0.9%
11-12 AM			35	13	41	16	46	24			41	18	58	0.5%
LANES			6553	6340	6130	6114	6763	6523			6482	6326	12808	100.0%
TOTAL			12893		12244		13286				12810			
	MON		TUE		WED		THURS		FRI		WK AVG			

PEAK HOUR					TOTAL VEHICALS-PEAK PERIODS		2 HOUR PEAK INTERVALS			
MAX. 7 - 9 am PEAK HOUR	1020	⇒	8.0%	between 8-9 AM	5805	⇒ 6 HR TOTAL	2 HR AM (7 - 9 AM)			
MAX. 7 - 11 am PEAK HOUR	1020	⇒	8.0%	between 8-9 AM	4144	⇒ 4 HR TOTAL	VEH / HR	VEH / 2HR	2 HR %	
							7-8 AM	857	1876	14.7%
							8-9 AM	1020		
MAX. 11 am - 1 pm PEAK HOUR	846	⇒	6.6%	between 12-1 PM	24 HOUR FACTORS					
MAX. 11 am - 3 pm PEAK HOUR	917	⇒	7.2%	between 2-3 PM						
MAX. 4 - 6 pm PEAK HOUR	1215	⇒	9.5%	between 4-5 PM	2.21	⇒ 6-24 HR FACT.	2 HR NOON (11 - 1 PM)			
MAX. 3 - 6 pm PEAK HOUR	1215	⇒	9.5%	between 4-5 PM	3.09	⇒ 4-24 HR FACT.	VEH / HR	VEH / 2HR	2 HR %	
							11-12 PM	815	1661	13.0%
							12-1 PM	846		
							2 HR PM (4 - 6 PM)			
							VEH / HR	VEH / 2HR	2 HR %	
							4-5 PM	1215	2268	17.7%
							5-6 PM	1052		

West Saanich Rd between Interurban Rd and Prospect Lake Rd

Northbound

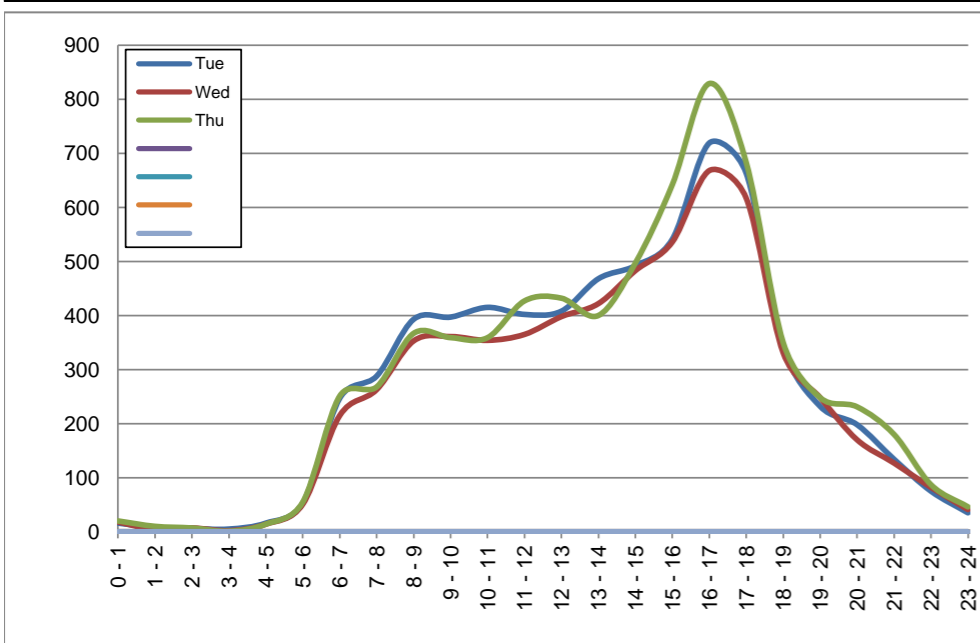
April 2, 2019 to April 4, 2019

Hourly Volumes

Time Period	Tue	Wed	Thu			
	Apr 2	Apr 3	Apr 4			
0 - 1	16	18	20			
1 - 2	8	4	10			
2 - 3	6	7	7			
3 - 4	5	2	1			
4 - 5	16	14	14			
5 - 6	53	51	55			
6 - 7	247	215	251			
7 - 8	288	263	268			
8 - 9	393	353	367			
9 - 10	397	361	359			
10 - 11	415	354	359			
11 - 12	402	365	427			
12 - 13	408	398	432			
13 - 14	468	422	400			
14 - 15	492	483	497			
15 - 16	541	536	642			
16 - 17	719	668	829			
17 - 18	663	617	683			
18 - 19	342	331	350			
19 - 20	232	248	248			
20 - 21	198	170	231			
21 - 22	134	127	180			
22 - 23	75	82	87			
23 - 24	35	41	46			
Day Total	6553	6130	6763			

15-Minute Volumes

Time Start	Tue	Wed	Thu			
	Apr 2	Apr 3	Apr 4			
0:00	6	7	4			
0:15	8	7	10			
0:30	1	2	4			
0:45	1	2	2			
1:00	1	0	2			
1:15	2	1	1			
1:30	3	2	4			
1:45	2	1	3			
2:00	2	2	1			
2:15	2	1	0			
2:30	0	1	2			
2:45	2	3	4			
3:00	1	0	0			
3:15	1	0	0			
3:30	2	1	1			
3:45	1	1	0			
4:00	1	1	0			
4:15	5	4	2			
4:30	5	3	5			
4:45	5	6	7			
5:00	7	7	12			
5:15	10	9	7			
5:30	13	16	14			
5:45	23	19	22			
6:00	33	26	27			
6:15	55	54	55			
6:30	87	78	99			
6:45	72	57	70			
7:00	52	60	57			
7:15	60	55	57			
7:30	76	61	70			
7:45	100	87	84			
8:00	73	65	87			
8:15	99	94	80			
8:30	121	103	99			
8:45	100	91	101			
9:00	99	96	105			
9:15	81	99	85			
9:30	101	85	79			
9:45	116	81	90			
10:00	110	95	97			
10:15	89	90	88			
10:30	109	85	84			
10:45	107	84	90			
11:00	104	85	122			
11:15	93	95	110			
11:30	109	88	95			
11:45	96	97	100			
12:00	99	110	115			
12:15	110	101	118			
12:30	112	89	103			
12:45	87	98	96			
13:00	114	105	91			
13:15	120	105	104			
13:30	120	100	102			
13:45	114	112	103			
14:00	112	104	122			
14:15	117	123	127			
14:30	126	134	127			
14:45	137	122	121			
15:00	117	115	147			
15:15	138	139	162			
15:30	138	139	140			
15:45	148	143	193			
16:00	177	159	212			
16:15	179	164	204			
16:30	183	177	205			
16:45	180	168	208			
17:00	188	161	159			
17:15	174	153	187			
17:30	159	170	163			
17:45	142	133	174			
18:00	110	99	95			
18:15	89	85	82			
18:30	80	80	81			
18:45	63	67	92			
19:00	68	58	75			
19:15	66	63	69			
19:30	53	66	63			
19:45	45	61	41			
20:00	51	47	58			
20:15	56	38	80			
20:30	42	39	51			
20:45	49	46	42			
21:00	28	38	42			
21:15	45	21	50			
21:30	33	32	49			
21:45	28	36	39			
22:00	24	24	23			
22:15	18	21	33			
22:30	18	24	21			
22:45	15	13	10			
23:00	15	14	16			
23:15	9	14	13			
23:30	3	4	10			
23:45	8	9	7			



Site notes:

West Saanich Rd between Interurban Rd and Prospect Lake Rd

Southbound

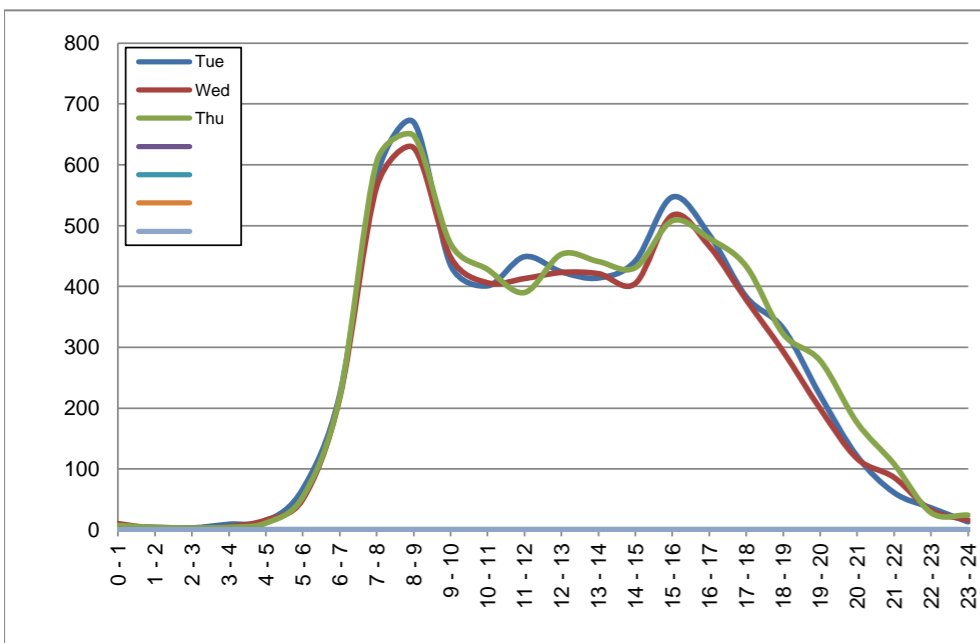
April 2, 2019 to April 4, 2019

Hourly Volumes

Time Period	Tue	Wed	Thu			
	Apr 2	Apr 3	Apr 4			
0 - 1	6	10	7			
1 - 2	4	2	4			
2 - 3	3	2	3			
3 - 4	9	5	4			
4 - 5	14	16	11			
5 - 6	67	50	54			
6 - 7	222	217	218			
7 - 8	582	564	605			
8 - 9	670	628	648			
9 - 10	435	448	470			
10 - 11	401	406	428			
11 - 12	449	413	390			
12 - 13	424	423	453			
13 - 14	414	421	441			
14 - 15	442	405	431			
15 - 16	547	517	508			
16 - 17	485	466	479			
17 - 18	383	378	433			
18 - 19	331	293	322			
19 - 20	221	199	278			
20 - 21	121	117	176			
21 - 22	61	86	108			
22 - 23	36	32	28			
23 - 24	13	16	24			
Day Total	6340	6114	6523			

15-Minute Volumes

Time Start	Tue	Wed	Thu			
	Apr 2	Apr 3	Apr 4			
0:00	3	2	3			
0:15	2	3	3			
0:30	0	3	0			
0:45	1	2	1			
1:00	2	0	1			
1:15	1	0	0			
1:30	1	2	2			
1:45	0	0	1			
2:00	3	2	1			
2:15	0	0	0			
2:30	0	0	0			
2:45	0	0	2			
3:00	1	0	1			
3:15	4	2	1			
3:30	2	2	1			
3:45	2	1	1			
4:00	0	1	1			
4:15	6	5	2			
4:30	6	7	5			
4:45	2	3	3			
5:00	8	6	4			
5:15	12	11	11			
5:30	23	17	12			
5:45	24	16	27			
6:00	31	38	37			
6:15	46	47	37			
6:30	76	59	78			
6:45	69	73	66			
7:00	116	125	116			
7:15	134	120	140			
7:30	158	138	161			
7:45	174	181	188			
8:00	183	154	192			
8:15	176	184	170			
8:30	179	168	160			
8:45	132	122	126			
9:00	114	110	120			
9:15	124	112	114			
9:30	97	112	132			
9:45	100	114	104			
10:00	98	103	114			
10:15	111	107	103			
10:30	106	104	104			
10:45	86	92	107			
11:00	105	106	84			
11:15	104	91	87			
11:30	123	123	99			
11:45	117	93	120			
12:00	101	108	119			
12:15	111	96	115			
12:30	109	102	103			
12:45	103	117	116			
13:00	87	86	107			
13:15	116	121	115			
13:30	105	106	119			
13:45	106	108	100			
14:00	101	92	97			
14:15	104	96	96			
14:30	103	107	112			
14:45	134	110	126			
15:00	153	132	127			
15:15	121	144	111			
15:30	147	121	139			
15:45	126	120	131			
16:00	120	113	117			
16:15	125	111	122			
16:30	116	116	105			
16:45	124	126	135			
17:00	98	106	124			
17:15	119	98	118			
17:30	84	98	103			
17:45	82	76	88			
18:00	92	90	104			
18:15	70	73	73			
18:30	90	68	77			
18:45	79	62	68			
19:00	73	48	78			
19:15	52	49	82			
19:30	52	52	59			
19:45	44	50	59			
20:00	32	42	55			
20:15	34	28	45			
20:30	32	24	38			
20:45	23	23	38			
21:00	16	33	24			
21:15	16	26	24			
21:30	15	16	35			
21:45	14	11	25			
22:00	13	12	7			
22:15	7	5	6			
22:30	8	10	8			
22:45	8	5	7			
23:00	2	1	6			
23:15	2	6	9			
23:30	7	9	5			
23:45	2	0	4			



Site notes:

Vehicle Speed Summary

Saanich Engineering Department

Count Id: [M0040-05](#)

Filename: [West Saanich Rd between Interurban Rd and Prospect Lake Rd-Apr-2019.xlsm](#)

Location: West Saanich Rd between Interurban Rd and Prospect Lake Rd

Note: Interurban Rd and Prospect Lake Rd

Direction: **North-South**

Dates: **April 01, 2019 To April 05, 2019**

Filtered data

AVG. SPEED	38 mph	61 km/h
50 % SPEED	38 mph	61 km/h
85 % SPEED	41 mph	67 km/h
95 % SPEED	44 mph	70 km/h

Location Map



West Saanich Rd between Interurban Rd and Prospect Lake Rd

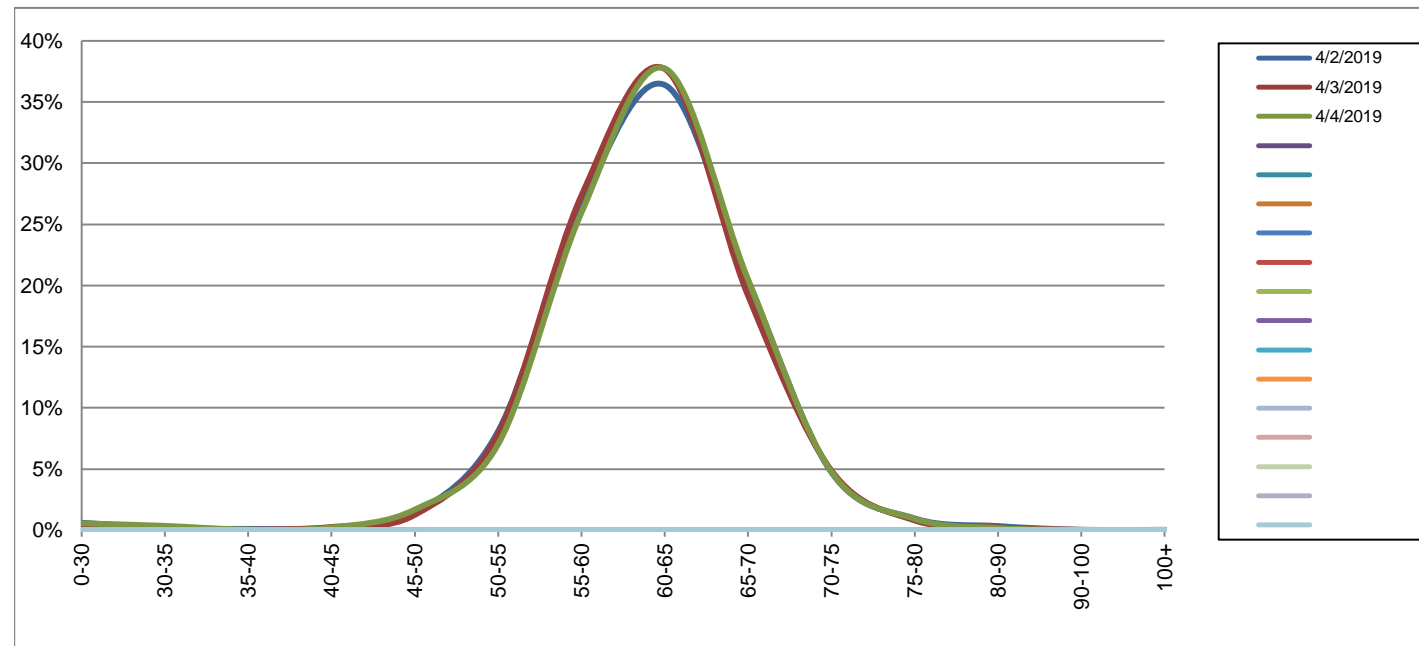
Northbound

April 2, 2019 to April 4, 2019

Daily Speed Bin Percentages														Daily Speed Bin Volumes														Total	Avg.	
Bin #	1	2	3	4	5	6	7	8	9	10	11	12	13	14	1	2	3	4	5	6	7	8	9	10	11	12	13	14	Volume	Speed
Bin Speeds	0-30	30-35	35-40	40-45	45-50	50-55	55-60	60-65	65-70	70-75	75-80	80-90	90-100	100+	0-30	30-35	35-40	40-45	45-50	50-55	55-60	60-65	65-70	70-75	75-80	80-90	90-100	100+		
4/2/2019	0.6%	0.2%	0.1%	0.2%	1.4%	8.1%	26.5%	36.4%	20.4%	4.7%	1.0%	0.3%	0.0%	0.0%	40	12	7	13	93	530	1739	2385	1335	310	63	22	2	2	6553	61
4/3/2019	0.3%	0.1%	0.0%	0.3%	1.3%	7.9%	27.4%	37.7%	19.2%	4.9%	0.8%	0.2%	0.0%	0.0%	21	4	2	16	77	482	1677	2311	1175	299	49	14	2	1	6130	62
4/4/2019	0.6%	0.4%	0.0%	0.2%	1.7%	7.0%	26.0%	37.7%	20.5%	4.8%	0.9%	0.2%	0.0%	0.0%	38	24	3	15	114	475	1756	2553	1386	323	63	12	1	0	6763	62
Total	0.5%	0.2%	0.1%	0.2%	1.5%	7.6%	26.6%	37.3%	20.0%	4.8%	0.9%	0.2%	0.0%	0.0%	99	40	12	44	284	1487	5172	7249	3896	932	175	48	5	3	19446	62

Speed Data Summary

Bin #	1	2	3	4	5	6	7	8	9	10	11	12	13	14	Total
Bin Speeds	0-30	30-35	35-40	40-45	45-50	50-55	55-60	60-65	65-70	70-75	75-80	80-90	90-100	100+	
Survey Total	99	40	12	44	284	1487	5172	7249	3896	932	175	48	5	3	19446
% Total	0.5%	0.2%	0.1%	0.2%	1.5%	7.6%	26.6%	37.3%	20.0%	4.8%	0.9%	0.2%	0.0%	0.0%	100%
Accumulated %	0.5%	0.7%	0.8%	1.0%	2.5%	10.1%	36.7%	74.0%	94.0%	98.8%	99.7%	100.0%	100.0%	100%	
Inverse Accum. %	99.5%	99.3%	99.2%	99.0%	97.5%	89.9%	63.3%	26.0%	6.0%	1.2%	0.3%	0.0%	0.0%	0.0%	
Average Speed	62 KM/H														



Site notes:

West Saanich Rd between Interurban Rd and Prospect Lake Rd

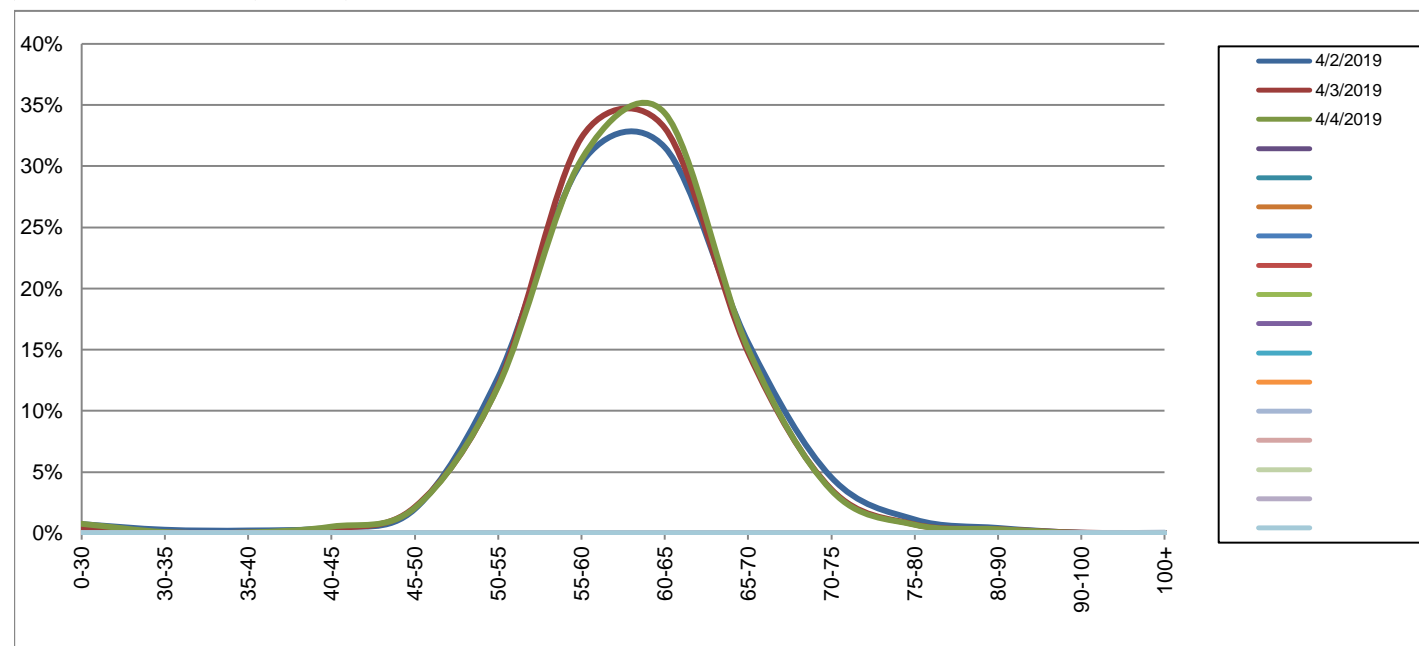
Southbound

April 2, 2019 to April 4, 2019

Daily Speed Bin Percentages														Daily Speed Bin Volumes														Total	Avg.	
Bin #	1	2	3	4	5	6	7	8	9	10	11	12	13	14	1	2	3	4	5	6	7	8	9	10	11	12	13	14	Volume	Speed
Bin Speeds	0-30	30-35	35-40	40-45	45-50	50-55	55-60	60-65	65-70	70-75	75-80	80-90	90-100	100+	0-30	30-35	35-40	40-45	45-50	50-55	55-60	60-65	65-70	70-75	75-80	80-90	90-100	100+		
4/2/2019	0.7%	0.3%	0.2%	0.5%	2.0%	12.7%	30.3%	31.5%	15.6%	4.6%	1.1%	0.4%	0.0%	0.0%	47	18	14	30	125	808	1919	2000	988	289	71	27	2	2	6340	60
4/3/2019	0.4%	0.1%	0.0%	0.4%	2.1%	12.1%	32.3%	33.1%	14.8%	3.6%	0.7%	0.3%	0.0%	0.0%	23	4	3	22	131	739	1977	2025	903	219	44	20	3	1	6114	60
4/4/2019	0.8%	0.1%	0.1%	0.5%	2.1%	12.0%	30.6%	34.3%	15.1%	3.5%	0.7%	0.3%	0.0%	0.0%	50	6	4	35	135	782	1993	2240	983	228	45	21	1	0	6523	60
Total	0.6%	0.1%	0.1%	0.5%	2.1%	12.3%	31.0%	33.0%	15.1%	3.9%	0.8%	0.4%	0.0%	0.0%	120	28	21	87	391	2329	5889	6265	2874	736	160	68	6	3	18977	60

Speed Data Summary

Bin #	1	2	3	4	5	6	7	8	9	10	11	12	13	14	Total
Bin Speeds	0-30	30-35	35-40	40-45	45-50	50-55	55-60	60-65	65-70	70-75	75-80	80-90	90-100	100+	
Survey Total	120	28	21	87	391	2329	5889	6265	2874	736	160	68	6	3	18977
% Total	0.6%	0.1%	0.1%	0.5%	2.1%	12.3%	31.0%	33.0%	15.1%	3.9%	0.8%	0.4%	0.0%	0.0%	100%
Accumulated %	0.6%	0.8%	0.9%	1.3%	3.4%	15.7%	46.7%	79.7%	94.9%	98.8%	99.6%	100.0%	100.0%	100%	
Inverse Accum. %	99.4%	99.2%	99.1%	98.7%	96.6%	84.3%	53.3%	20.3%	5.1%	1.2%	0.4%	0.0%	0.0%	0.0%	
Average Speed	60 KM/H														



Site notes:

West Saanich Rd between Interurban Rd and Prospect Lake Rd

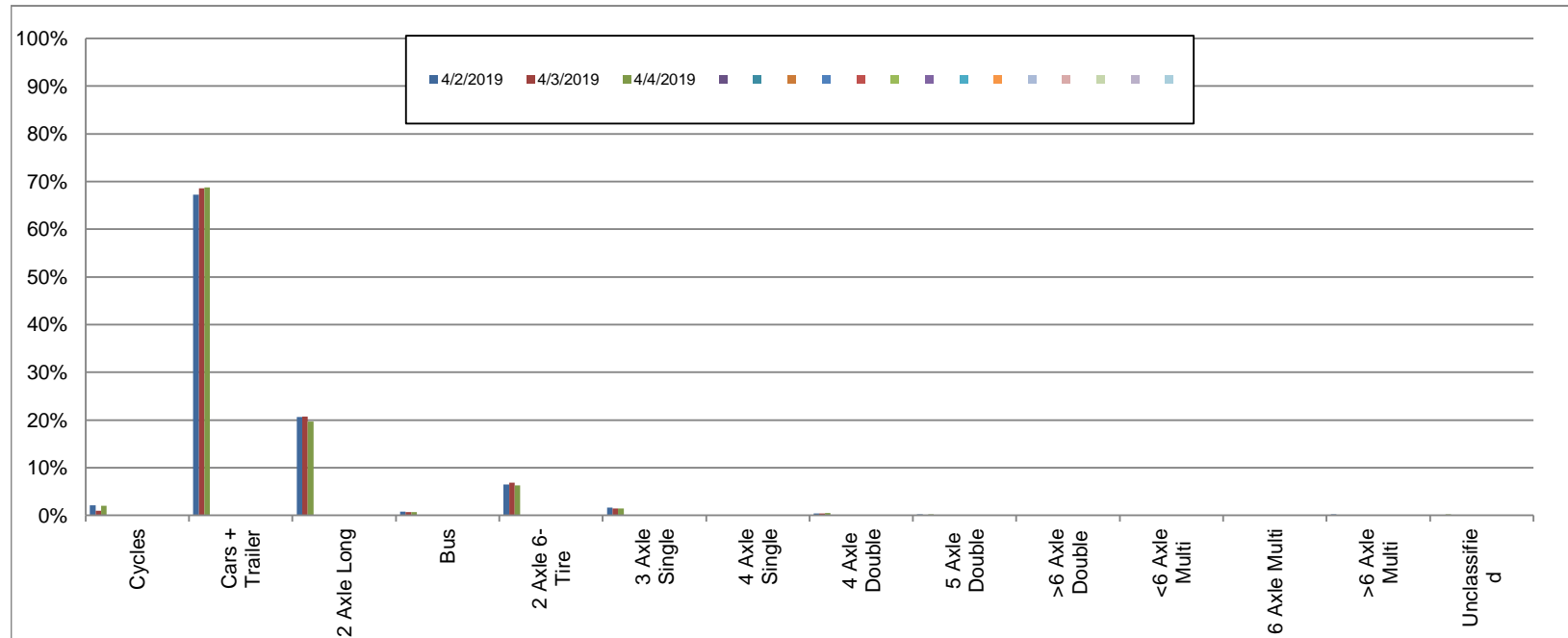
Northbound

April 2, 2019 to April 4, 2019

Daily Class Bin Percentages															Daily Class Bin Volumes											Total Volume			
Bin #	1	2	3	4	5	6	7	8	9	10	11	12	13	14	1	2	3	4	5	6	7	8	9	10	11		12	13	14
Bin Class	Cycles	Cars + Trailer	2 Axle Long	Bus	2 Axle 6-Tire	3 Axle Single	4 Axle Single	4 Axle Double	5 Axle Double	>6 Axle Double	<6 Axle Multi	6 Axle Multi	>6 Axle Multi	Unclassified	Cycles	Cars + Trailer	2 Axle Long	Bus	2 Axle 6-Tire	3 Axle Single	4 Axle Single	4 Axle Double	5 Axle Double	>6 Axle Double	<6 Axle Multi	6 Axle Multi	>6 Axle Multi	Unclassified	
4/2/2019	2.1%	67.3%	20.6%	0.8%	6.5%	1.6%	0.0%	0.4%	0.2%	0.1%	0.0%	0.0%	0.2%	0.1%	140	4409	1352	51	426	105	1	29	12	6	0	0	13	9	6553
4/3/2019	0.9%	68.6%	20.8%	0.7%	6.8%	1.4%	0.1%	0.4%	0.0%	0.1%	0.0%	0.0%	0.0%	0.1%	57	4206	1272	41	419	88	6	27	2	8	0	0	0	4	6130
4/4/2019	2.0%	68.7%	19.7%	0.7%	6.3%	1.5%	0.0%	0.5%	0.2%	0.1%	0.0%	0.0%	0.1%	0.2%	136	4648	1331	45	425	99	3	35	11	10	0	0	4	16	6763
Total	1.7%	68.2%	20.3%	0.7%	6.5%	1.5%	0.1%	0.5%	0.1%	0.1%	0.0%	0.0%	0.1%	0.1%	333	13263	3955	137	1270	292	10	91	25	24	0	0	17	29	19446

Class Data Summary

Bin #	1	2	3	4	5	6	7	8	9	10	11	12	13	14	Total Volume
Bin Class	Cycles	Cars + Trailer	2 Axle Long	Bus	2 Axle 6-Tire	3 Axle Single	4 Axle Single	4 Axle Double	5 Axle Double	>6 Axle Double	<6 Axle Multi	6 Axle Multi	>6 Axle Multi	Unclassified	Total Volume
Survey Total	333	13263	3955	137	1270	292	10	91	25	24	0	0	17	29	19446
% Total	1.7%	68.2%	20.3%	0.7%	6.5%	1.5%	0.1%	0.5%	0.1%	0.1%	0.0%	0.0%	0.1%	0.1%	100%
Accumulated %	1.7%	69.9%	90.3%	91.0%	97.5%	99.0%	99.0%	99.5%	99.6%	99.8%	99.8%	99.8%	99.9%	100.0%	
Inv. Accum. %	98.3%	30.1%	9.7%	9.0%	2.5%	1.0%	1.0%	0.5%	0.4%	0.2%	0.2%	0.2%	0.1%	0.0%	



Classification Descriptions

Bin #	Bin Description
1	Motorcycles
2	Passenger cars, including those with recreational trailers
3	2-axle pick-ups, vans, and RVs, including those with recreational trailers
4	Buses
5	2-axle, 6-tire single units
6	3-axle single units
7	4-axle single units
8	3-axle or 4-axle double unit
9	5-axle double unit
10	6-, 7-, or 8-axle double unit
11	5-axle multiple unit
12	6-axle multiple unit
13	7-or-more-axle multiple unit
14	Vehicles that could not be classified

Site notes:

West Saanich Rd between Interurban Rd and Prospect Lake Rd

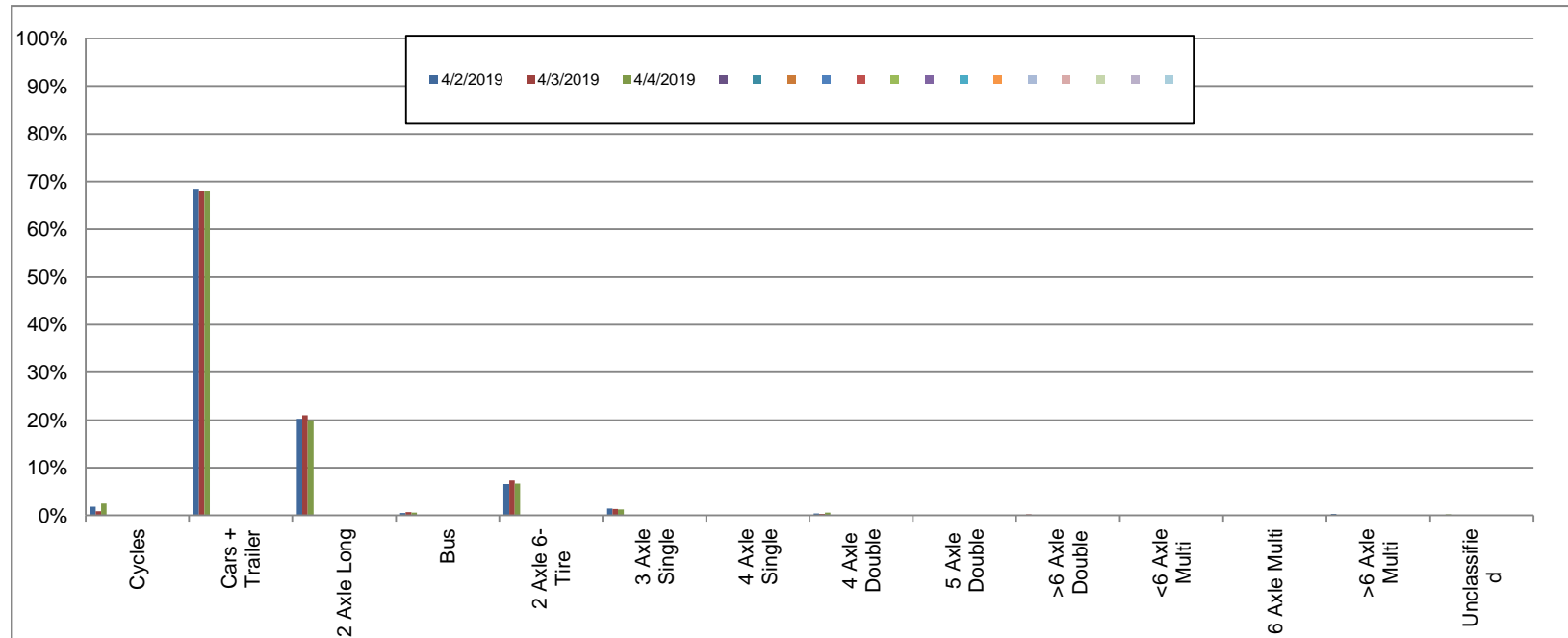
Southbound

April 2, 2019 to April 4, 2019

Daily Class Bin Percentages															Daily Class Bin Volumes											Total Volume			
Bin #	1	2	3	4	5	6	7	8	9	10	11	12	13	14	1	2	3	4	5	6	7	8	9	10	11		12	13	14
Bin Class	Cycles	Cars + Trailer	2 Axle Long	Bus	2 Axle 6-Tire	3 Axle Single	4 Axle Single	4 Axle Double	5 Axle Double	>6 Axle Double	<6 Axle Multi	6 Axle Multi	>6 Axle Multi	Unclassified	Cycles	Cars + Trailer	2 Axle Long	Bus	2 Axle 6-Tire	3 Axle Single	4 Axle Single	4 Axle Double	5 Axle Double	>6 Axle Double	<6 Axle Multi	6 Axle Multi	>6 Axle Multi	Unclassified	
4/2/2019	1.8%	68.5%	20.3%	0.5%	6.6%	1.4%	0.0%	0.4%	0.0%	0.1%	0.0%	0.0%	0.3%	0.1%	114	4340	1286	33	416	90	1	24	3	8	0	0	17	8	6340
4/3/2019	0.9%	68.1%	21.0%	0.7%	7.4%	1.3%	0.0%	0.3%	0.1%	0.2%	0.0%	0.0%	0.0%	0.1%	54	4162	1284	40	450	81	2	19	6	11	0	0	0	5	6114
4/4/2019	2.5%	68.1%	20.0%	0.6%	6.6%	1.2%	0.0%	0.6%	0.1%	0.1%	0.0%	0.0%	0.0%	0.2%	162	4442	1303	36	432	80	2	36	6	9	0	0	0	15	6523
Total	1.7%	68.2%	20.4%	0.6%	6.8%	1.3%	0.0%	0.4%	0.1%	0.1%	0.0%	0.0%	0.1%	0.1%	330	12944	3873	109	1298	251	5	79	15	28	0	0	17	28	18977

Class Data Summary

Bin #	1	2	3	4	5	6	7	8	9	10	11	12	13	14	Total Volume
Bin Class	Cycles	Cars + Trailer	2 Axle Long	Bus	2 Axle 6-Tire	3 Axle Single	4 Axle Single	4 Axle Double	5 Axle Double	>6 Axle Double	<6 Axle Multi	6 Axle Multi	>6 Axle Multi	Unclassified	Total Volume
Survey Total	330	12944	3873	109	1298	251	5	79	15	28	0	0	17	28	18977
% Total	1.7%	68.2%	20.4%	0.6%	6.8%	1.3%	0.0%	0.4%	0.1%	0.1%	0.0%	0.0%	0.1%	0.1%	100%
Accumulated %	1.7%	69.9%	90.4%	90.9%	97.8%	99.1%	99.1%	99.5%	99.6%	99.8%	99.8%	99.8%	99.9%	100.0%	
Inv. Accum. %	98.3%	30.1%	9.6%	9.1%	2.2%	0.9%	0.9%	0.5%	0.4%	0.2%	0.2%	0.2%	0.1%	0.0%	



Classification Descriptions

Bin #	Bin Description
1	Motorcycles
2	Passenger cars, including those with recreational trailers
3	2-axle pick-ups, vans, and RVs, including those with recreational trailers
4	Buses
5	2-axle, 6-tire single units
6	3-axle single units
7	4-axle single units
8	3-axle or 4-axle double unit
9	5-axle double unit
10	6-, 7-, or 8-axle double unit
11	5-axle multiple unit
12	6-axle multiple unit
13	7-or-more-axle multiple unit
14	Vehicles that could not be classified

Site notes: